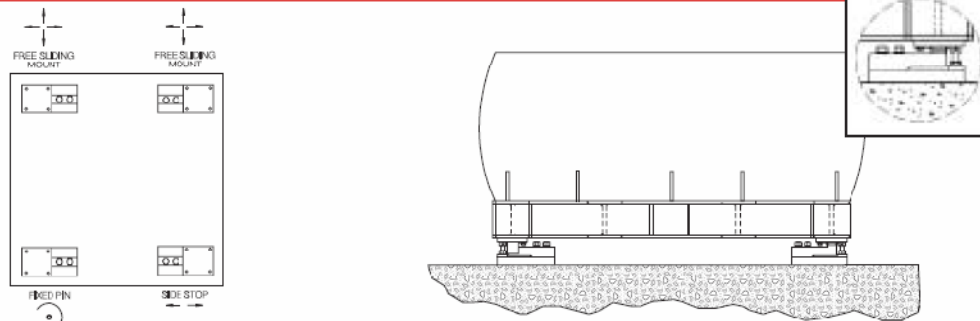
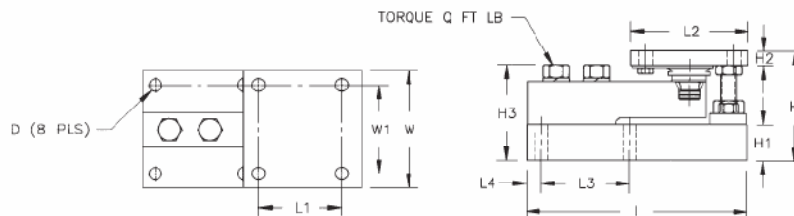


Paramounts Configuration Example



Typical mounting configuration uses one Side Stop, one Fixed Pin and one or more Free Sliding mounts

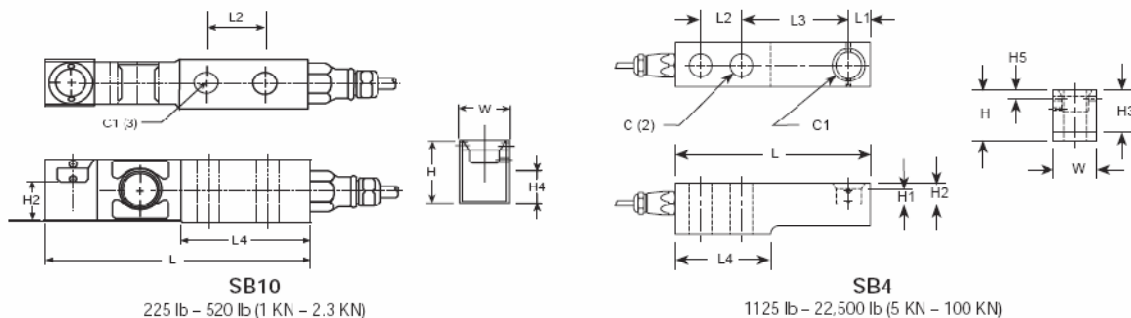
Paramounts Dimensions



RATED CAPACITY	DIMENSIONS—INCHES													(Ft.lb) Q
	D	H	H1	H2*	H2**	H3	L	L1	L2	L3	L4	W	W1	
225 lb (1 KN) – 520 lb (2.3 KN)	.437	3.49	1.00	.50	.75	2.98	7.51	3.00	4.00	3.00	.50	4.00	3.00	15
1,125 lb (5 KN) – 5,200 lb (23 KN)	.437	3.58	1.25	.50	.75	3.06	7.51	3.00	4.00	3.00	.50	4.00	3.00	65
11,250 lb (50 KN)	.562	4.66	1.50	.62	1.00	4.09	9.15	3.87	5.00	3.87	.56	5.00	3.87	295
22,500 lb (100 KN)	.388	6.41	2.00	.75	1.25	5.73	11.46	4.75	6.00	4.75	.69	6.00	4.75	515

*Side Stop and Free Sliding units **Fixed Pin units KN = Kilonewtons

Single Ended Beam Specifications



SB10
225 lb – 520 lb (1 KN – 2.3 KN)

SB4
1125 lb – 22,500 lb (5 KN – 100 KN)

RATED CAPACITY	DIMENSIONS—INCHES														
	C	C1	C2	H	H1	H2	H3	H4	H6	L	L1	L2	L3	L4	W
225 lb (1 KN) – 520 lb (2.3 KN)	–	.520*	–	1.58	–	.99	–	.81	–	6.10	–	1.387	–	2.98	.59
1,125 lb (5 KN) – 5,200 lb (23 KN)	.53	.709	–	1.42	.39	.59	1.19	–	.16	6.10	.59	1.38	3.15	2.98	1.18
11,250 lb (50 KN)	.85	.964	–	1.93	.58	.81	1.62	–	.31	7.48	.83	1.57	4.13	3.66	1.69
22,500 lb (100 KN)	1.06	1.181	–	2.87	.82	1.21	2.43	–	–	9.65	1.19	1.97	5.31	4.72	2.36

*±.005

NTEP-certified load cells available: Class III, 3000 divisions, single cell; capacities 1125 lb, 2250 lb, 5200 lb, and 11,250 lb.