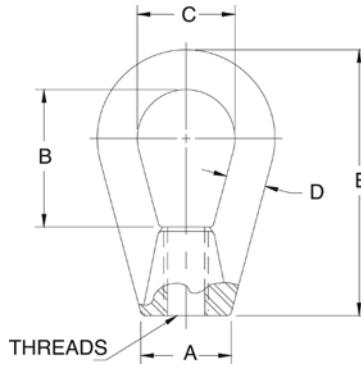


Eye Nuts



Standard Features

- Drop-forged steel, tapped NC right-hand threads

Part Number/Price

Part #	A	B	C	D	E	Thread Size	Safe Load*	Price
17772	0.50 in	1.06 in	0.75 in	0.25 in	1.68 in	1/4-20 UNC	500 lb	Consult
17773	0.75 in	1.18 in	0.87 in	0.31 in	2.25 in	3/8-16 UNC	1,800 lb	Consult
17774	1.00 in	1.56 in	1.12 in	0.43 in	3.00 in	1/2-13 UNC	3,600 lb	Consult
17775	1.25 in	1.93 in	1.37 in	0.56 in	3.75 in	5/8-11 UNC	5,800 lb	Consult

*Do not exceed the safe load

Coupling Nuts



Standard Features

- Heavy hex

Part Number/Price

Part #	Thread Size	Length	Flat	Safe Load*	Price
14638	1/4-20 UNC	1.75 in	0.44 in	500 lb	Consult
14650	3/8-16 UNC	1.75 in	0.62 in	1,500 lb	Consult
14663	1/2-13 UNC	1.75 in	0.87 in	3,000 lb	Consult
14681	5/8-11 UNC	2.12 in	1.06 in	7,500 lb	Consult
14691	3/4-10 UNC	2.25 in	1.25 in	10,000 lb	Consult

*Do not exceed the safe load